



MAPLE TERRACES

VERSATILE APARTMENTS AT PALGHAR EAST

This project is RERA registered

B 11: P99000010117
B 10: P99000008935
A 15: P99000005233



"available at website: <http://maharera.mahaonline.gov.in>"

REGISTERED OFFICE

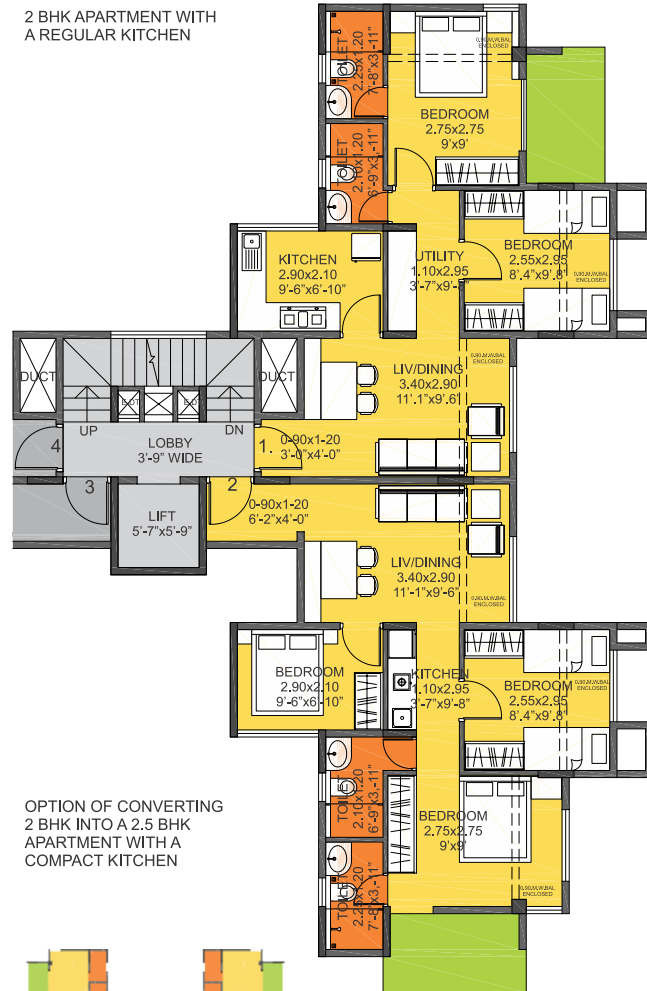
Axis Dwellings LLP.
A-501, Gladdiola
Old Hanuman Road
Vile Parle (East)
Mumbai 400057.
Tel: +91 22 26125506/7/8
Mobile No.: +91 98205 30902
Email: sales@amalg.com



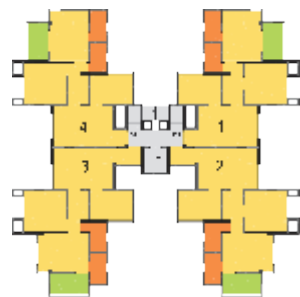
SITE OFFICE

S. No. 12PT,
Palghar Manor Road
Opp. Remi Group
Village Shelvali, Palghar (E)
Tel: +91 07738065727

Disclaimer :The information in this brochure is indicative of the kind of development that is proposed. In the interest of continuing improvement, the developers reserve the right to change the layout, plans, specifications or features.

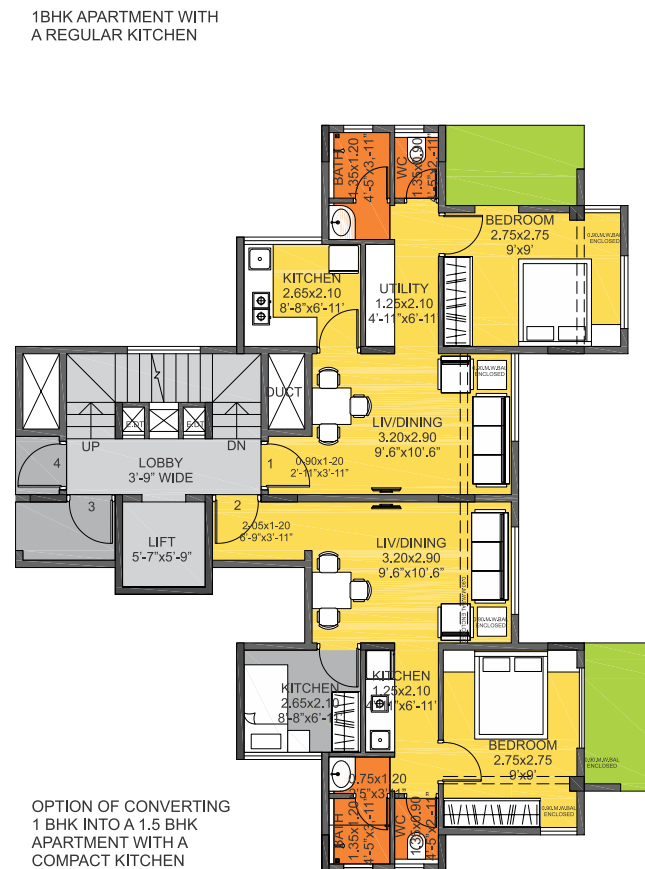


OPTION OF CONVERTING
2 BHK INTO A 2.5 BHK
APARTMENT WITH A
COMPACT KITCHEN

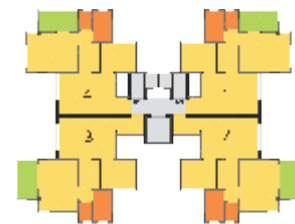


The 1.5 and 2.5 Bhk plan is a suggested modification

Building Type A
2 BHK Apartment

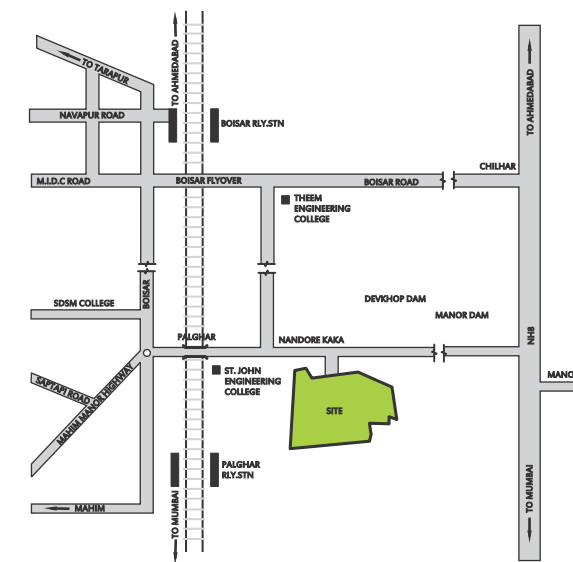


OPTION OF CONVERTING
1 BHK INTO A 1.5 BHK
APARTMENT WITH A
COMPACT KITCHEN



The 1.5 and 2.5 Bhk plan is a suggested modification

Building Type B
1 BHK Apartment



PALGHAR HAS A
NEW ADDRESS

OWN A PIECE OF
THE SKY

IMAGINE YOUR HOME IN THE SKIES

Count the colours of the sky everyday at Maple Terraces, Palghar's only apartments with a unique view of the sky. Wake up each morning to the call of the birds and the sounds of nature, the gentle patter of the rain or the thundering of the clouds- all this from the cosy confines of your home. Offering spacious 1 and 2 Bedroom Hall Kitchen apartments with special sky views. Enjoy the unending square feet of the sky. Own a home and with it, a piece of the sky.



Maple Terraces, Palghar's brand new township opens its doors to families wanting the peace and serenity of natural surroundings coupled with the vibrancy of an active neighbourhood. Offering unique 1 and 2BHK apartments, every family has an opportunity to extend a bit of their home into the sky.

- Branded vitrified tiles for entire flooring with skirting
- Anti skid tiles in toilets
- Granite kitchen platform with stainless steel sink and Glazed tiles dado
- Western style toilet seats
- Provision for Geyser in each bathroom
- Provision for installing an inverter

Every home at Maple Terraces has been designed keeping in mind the needs of a modern, growing family. The designs are flexible to give you an additional bedroom if the need arises. All the homes are equipped with the most modern amenities offering families an unparalleled living experience.

- Oil bound distemper paint
- AC Point in Master Bedroom
- Granite/Marble door frame for toilets
- Anodized aluminium sliding windows with clear glass
- Branded sanitary ware and CP fitting with concealed plumbing
- Lift in Each Building
- Ample Parking
- Elegant Main Entrance with decorative Nameplate
- Water proofing Treatment at Terrace

YOUR HOME IN THE SKIES NOW WITHIN EASY REACH



BE A PART OF A VIBRANT COMMUNITY

- Multi-purpose open sports court
- Club House /Community Hall
- Kids play area
- Library with internet connection
- Fully equipped gym
- Security cabins at Entrance and round the clock security
- Township with excellent Signage



ENJOY THE BENEFITS OF A MULTI-FACILITY TOWNSHIP

- Rain water harvesting and ground water recharging
- Adequate water supply
- Earthquake resistant structure
- RO Plant



NATURAL LANDSCAPES, OPEN SPACES AND A HOST OF AMENITIES